

NHS-WCRAS Partnership Overview

Evolving & Strengthening
the Strategic Partnership

January 2024



Process Outcome

Establish a strong working relationship through clarifying partnership expectations, operating parameters and guidelines.



Process, Approach & Timeframe

Timeframe: Nov '23 – Jan '24

Working Sessions: 5

Deliverables:

1. Working Agreements
2. Shared Goals & Measurable Outcomes
3. 2024 Joint Action Plan
4. Shared Key Message Points

Revisit the need to update the PSA in 12 months.



WCRAS

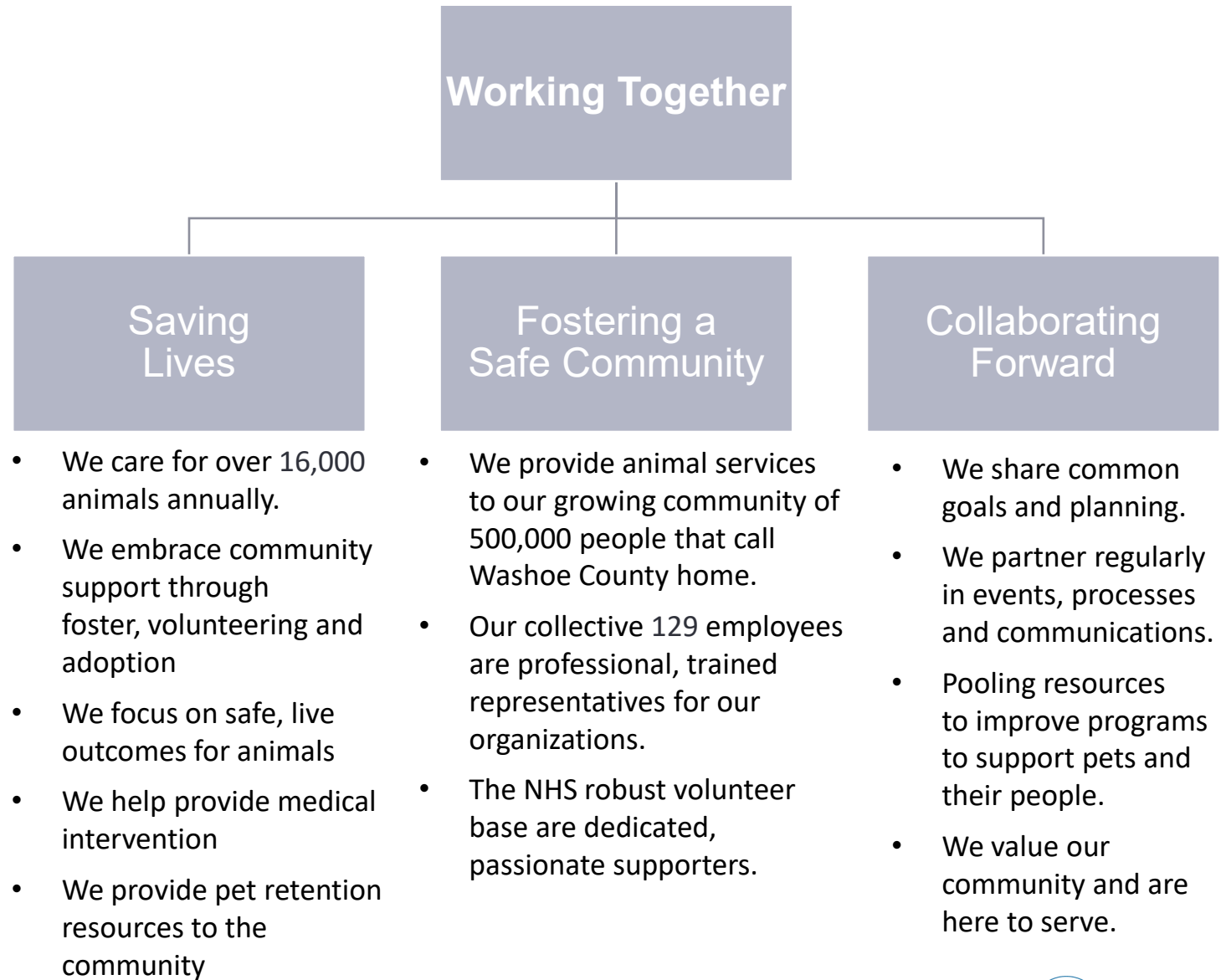
Shyanne Schull
Arthur Westbrook
Tammy Wines-Jennings
Dave Solaro



NHS

Jerleen Bryant
Trent Bingham
Melissa Davis
Nancy Wenzel

Key Message Points



Issues We Tackled

Overarching Goal(s) What is the goal of the partnership?

Measurables

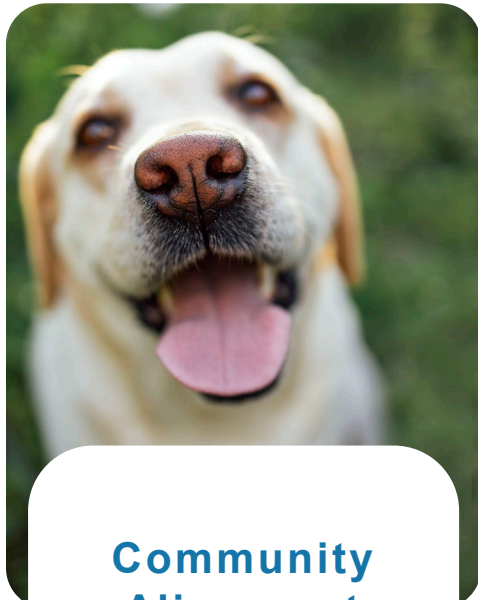
Transparency & Trust

Governance

Shared Transfer Expectations

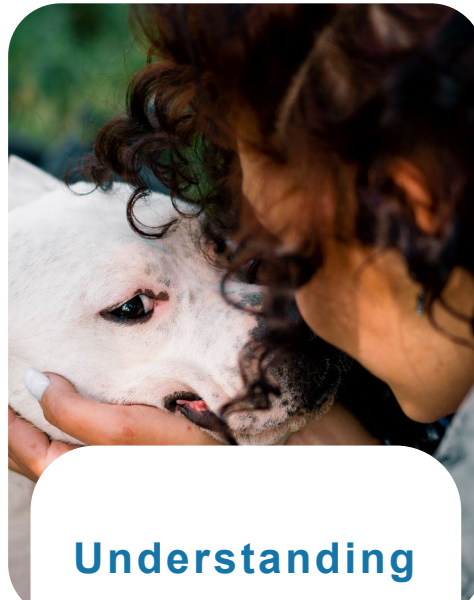
Shared Campus & Funding Sources

What We Learned



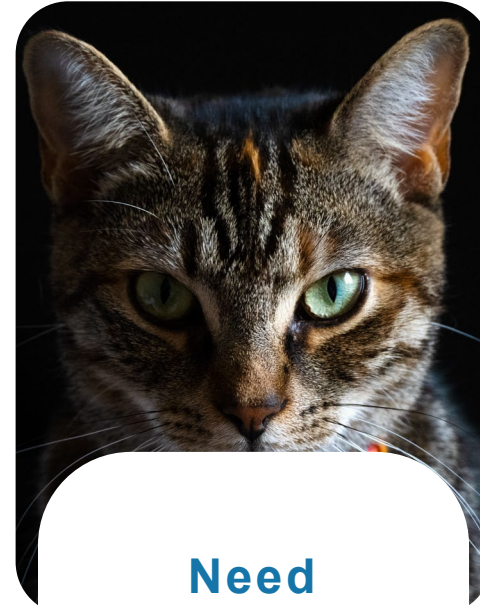
Community Alignment

Animal care is a community priority. We need everyone to work together.



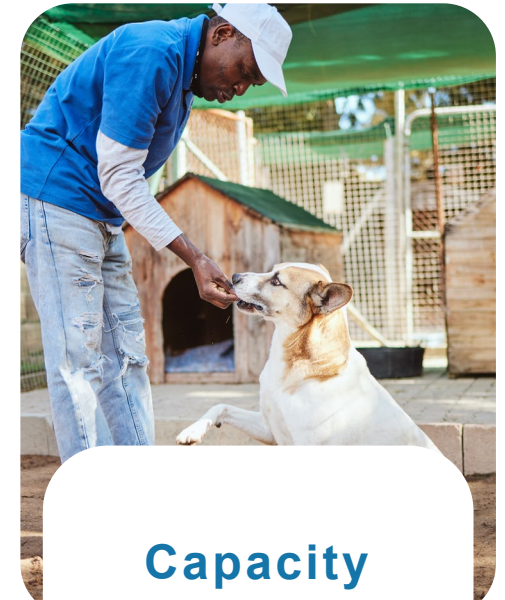
Understanding

Reground everyone and create a shared understanding of "no kill".



Need

Needs of animals in our care are complex. Critical need for dog behavior and transfer department and affordable spay/neuter.



Capacity

Frequent capacity challenges due to volume of animals. We need everyone's help, including the supporting efforts of stakeholders in our region.

Where We Are Today





Community Realities

1

The needs of our community are changing.

Lack of access to affordable veterinary care, and spay/neuter resources, pet-friendly housing for large breed dogs are just some of the drivers of animal relinquishment.

2

Capacity limitations within both NHS and WCRAS

Adherence to current sheltering guidelines and animal welfare best practices have significantly changed, requiring more space and higher standards of care, which directly impact a shelter's capacity.

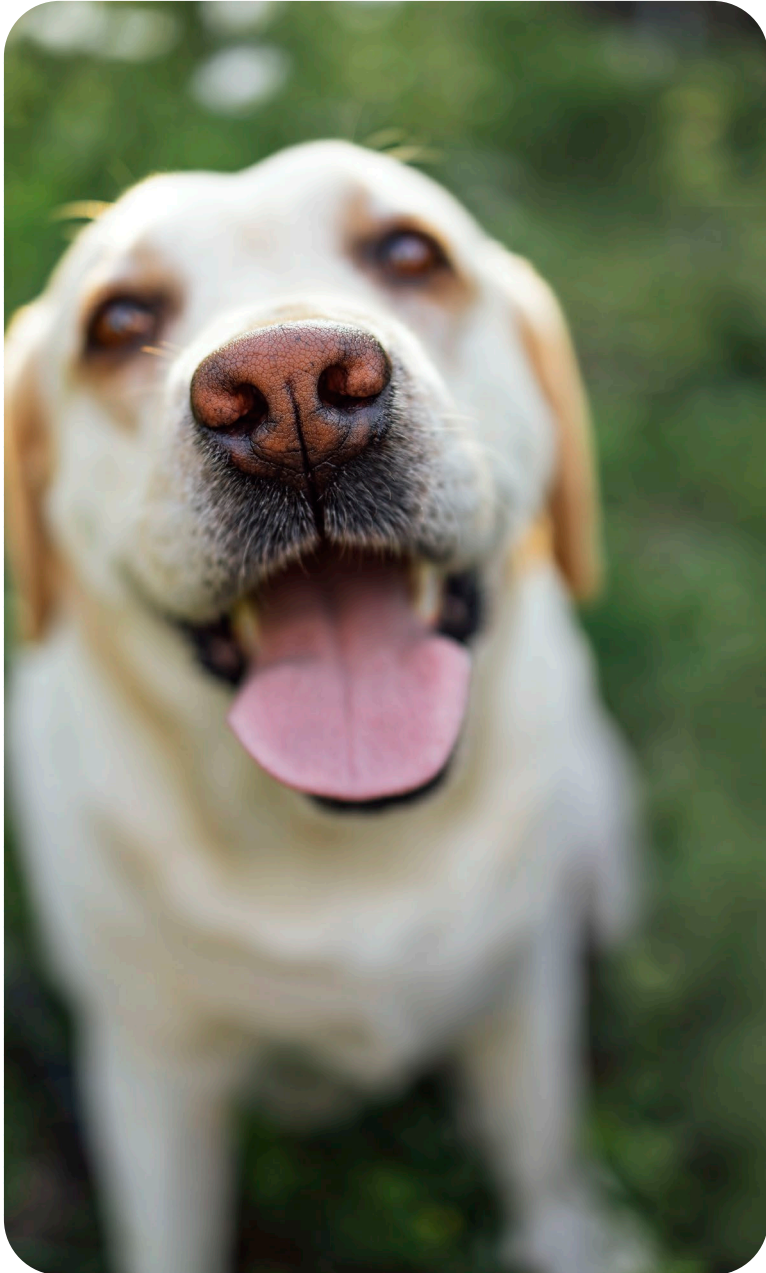
3

Together, we are the primary animal service providers in Washoe County

Together, NHS and WCRAS are the largest shelters in our region, with the most resources.

Moving Forward Together





Goal of the Partnership

Our number one goal is working together to do what is best for the animals and for our community.

Shared Working Agreements



We commit a **shared behavior criteria**.



We honor each other's individual operations while working **jointly** to realize the best outcomes for animals in our care.



We **don't** euthanize for space.



We will be **preemptive** whenever possible, when getting close to capacity.



We will "show up" **collectively** in the community.



We agree that we are **not "saving animals at all costs."**



We agree to support the transfer goals through the **transfer agreement**.

- To transfer minimum 80% of available dogs (average for quarter), unless NHS is at 80% or greater capacity for multiple days in a row.
- To transfer minimum 85% of available cats unless NHS is at 80% or greater capacity for multiple days in a row.



Shared Goals

1

Transfer volume, Capacity, Timeframes for Animals in Our Care
Finding homes for all safe, treatable and healthy animals (aiming for a joint 90% save rate).

2

Cohesive Efforts
Work collaboratively and cohesively from intake to adoption.

3

Data Sharing & Internal Communication
Create & maintain weekly shared data of key operational metrics.

4

Public Communication, Outreach & Response
Increase community awareness & understanding, together.

5

Managing the Regional Animal Population
Pool our resources to educate and provide programming to minimize overpopulation challenges in our region.

Transfers

DOGS - NHS transfers 80% of available dogs, unless NHS is at 80% or greater capacity for multiple days in a row.

If that condition is present:

- WCRAS/NHS executes joint community messaging for community help and other rescues.
- In this situation, NHS retains first right of refusal w/in 24 hrs.

CATS - NHS will put all effort to transfer 85%.

- Feral Cats - Strengthen the TNR Program.
- NHS is taking all good Samaritans, increased the criteria from 1.5lbs to 2lbs.
- NHS is increasing capacity for cats.
- Grow community partnerships for volume of cats (WCRAS).
- Revisit in 6 months for next set of strategies to reduce the total cat population.

Next Steps



90 Day Focus

- Shared behavior criteria
- Shared weekly reporting
- Create a shared community communications plan
- Spring '24 MASH clinic
- Establishing NHS Behavior/Transfer Dept.
- Onboarding WCRAS Vet

Going Forward

- Improved cross-organization communication
- Periodic, joint, board level, presentations
- Collaborative community messaging

Next Update, April 2024

